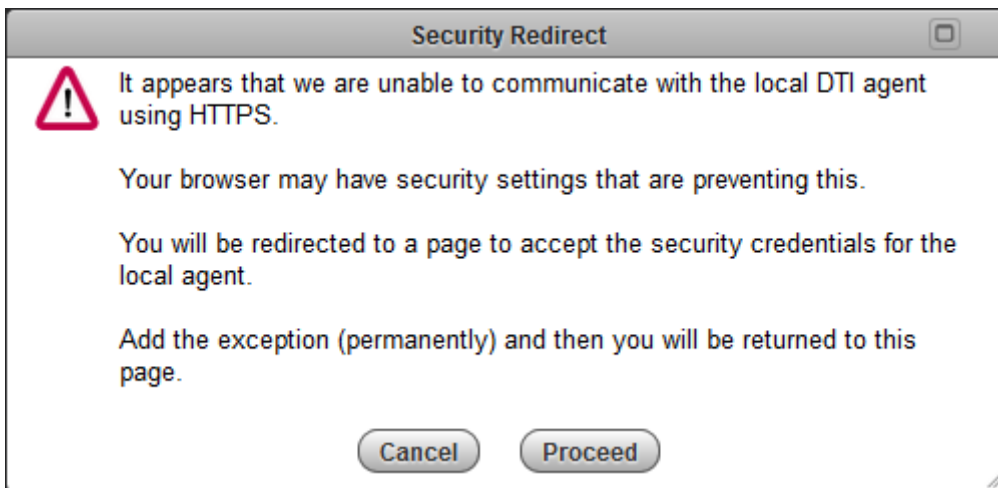




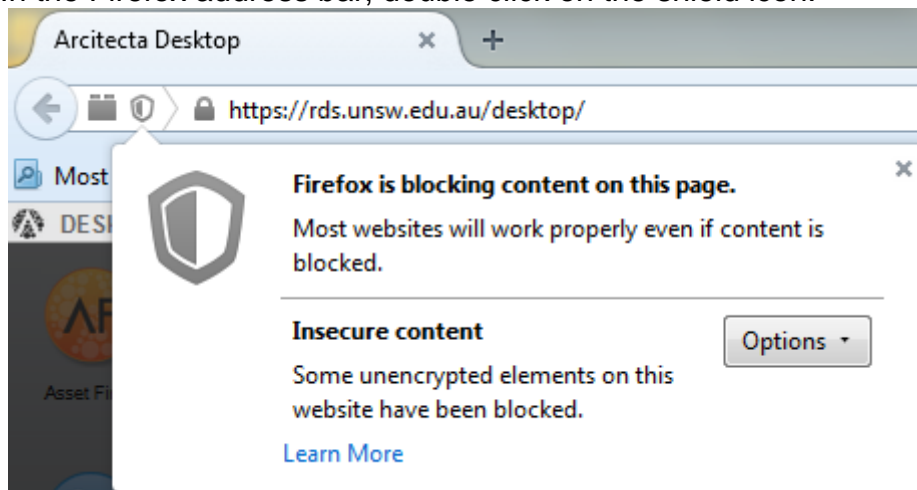
## 'Security Redirect' message has appeared - what do I do?

If the **Security Redirect** window displays when you open the UNSW Data Archive using the Java applet web-based user interface and you have installed both Java and Firefox or Safari,

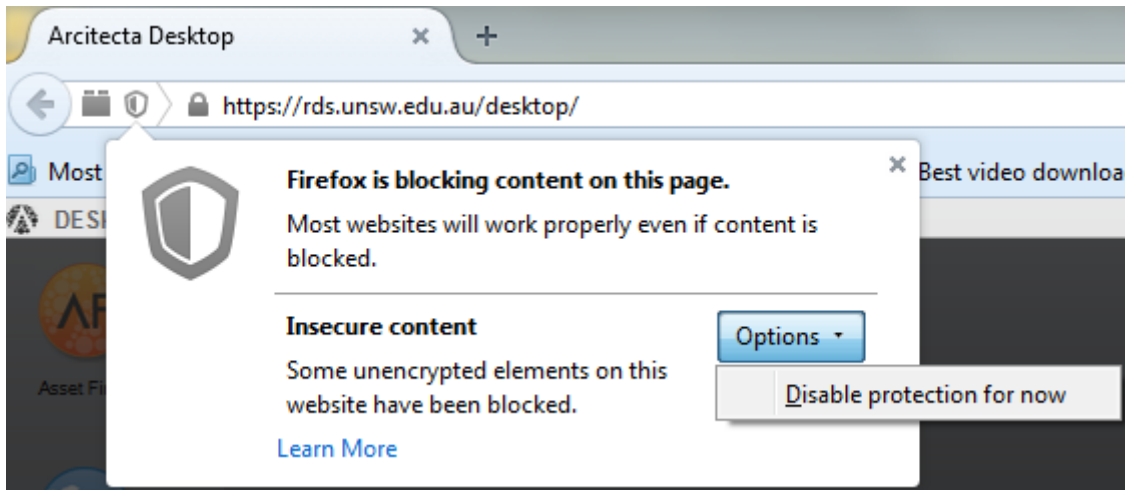


**ignore** the **Security Redirect** window and take the following steps to enable Java in the Firefox browser:

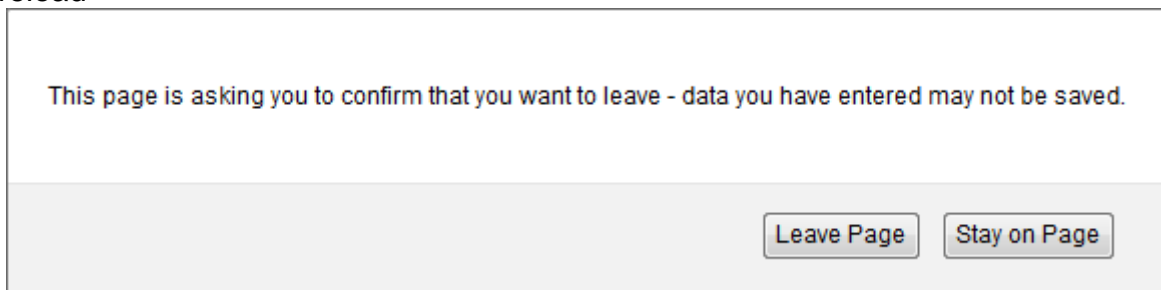
- In the Firefox address bar, double click on the shield icon:



- Click on the **Options** drop down and select **Disable Protection for now**:



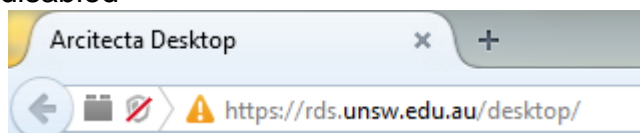
- A window will appear prompting you to Leave Page or Stay on Page; click on **Leave Page** and the Data Archive application will logout and the Data Archive login page will reload

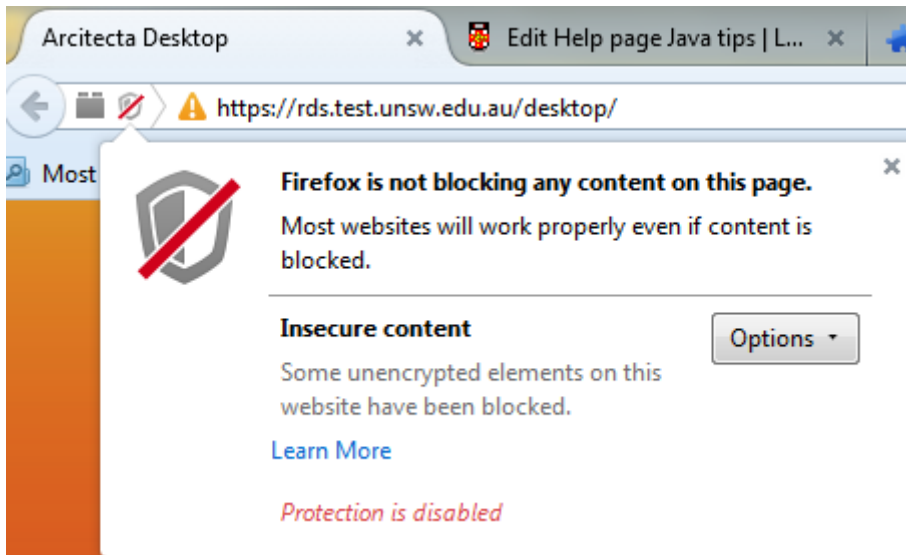


- Login to the Java applet web-based user interface using your zID (for User:) and zPass (for Password:)



- The Data Archive Java Applet web-based user interface will reload with protection disabled





- dti will now be active

**dti**. active

See the [Java applet guide](#) for further information and other troubleshooting ideas.

**Note:** Java is not required when you use the [Web application](#). For further information on using the Web application see the [Web application guide](#).

### Help and further information:

- To learn more about the Data Archive:
  - go to the [Start here](#) page
  - see all [Help Topics](#)
  - see all [Frequently Asked Questions](#) (FAQs)
  - browse through the carousel on the [homepage](#) to view all available videos
- To access the Data Archive Web application, use this [link](#), or, go to the [Home](#) page for other access options
- To access the Data Archive using the Java applet web-based user interface, use this [link](#). For more information, see the [Java applet guide](#)
- To create, or update, a Research Data Management Plan go to the [ResData](#) service
- **Note:** the Data Archive service is also available over SFTP, see the [SFTP client guide](#) for more information