



How do I upload a compressed file?

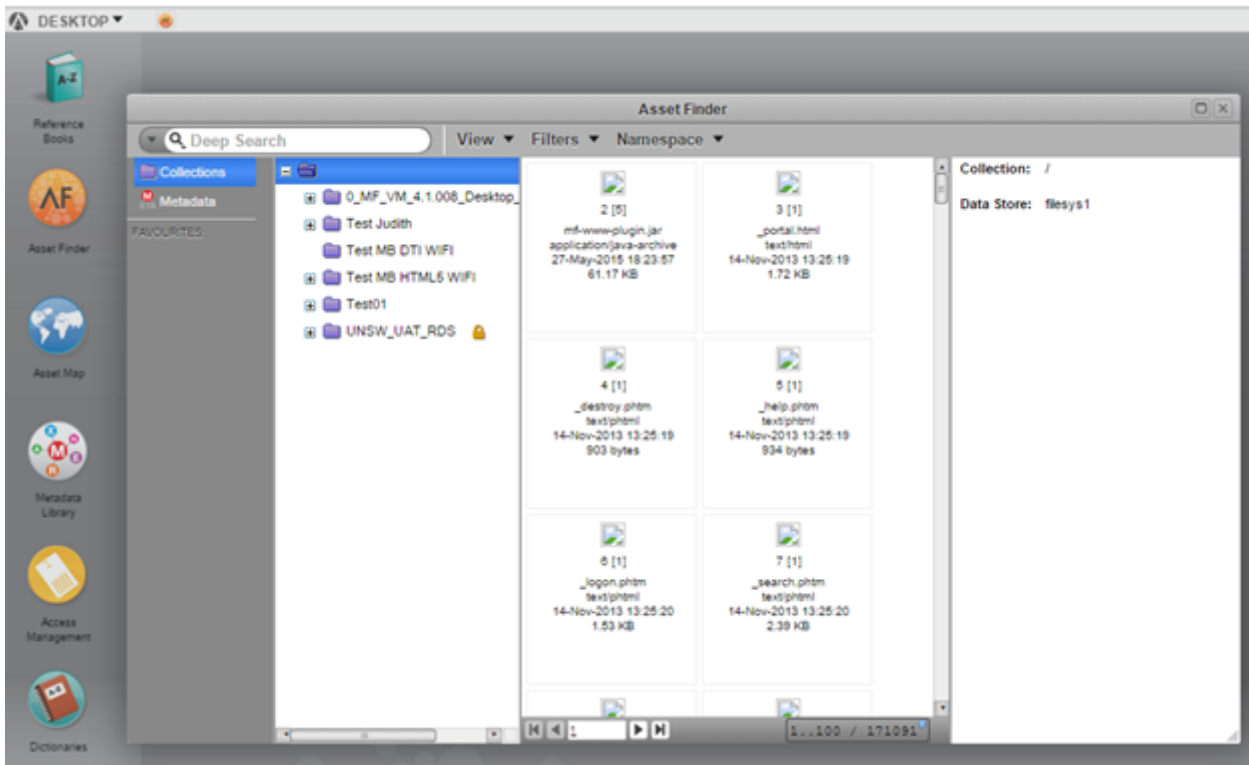
To upload a compressed file to the Data Archive, using the Web application, undertake the following steps:

1. Access the Data Archive Web application by opening a Chrome browser and entering the following URL: <https://rds.unsw.edu.au>. At the Data Archive login page, enter your UNSW zID (for User:) and zPass (for Password:) and click 'Login'.

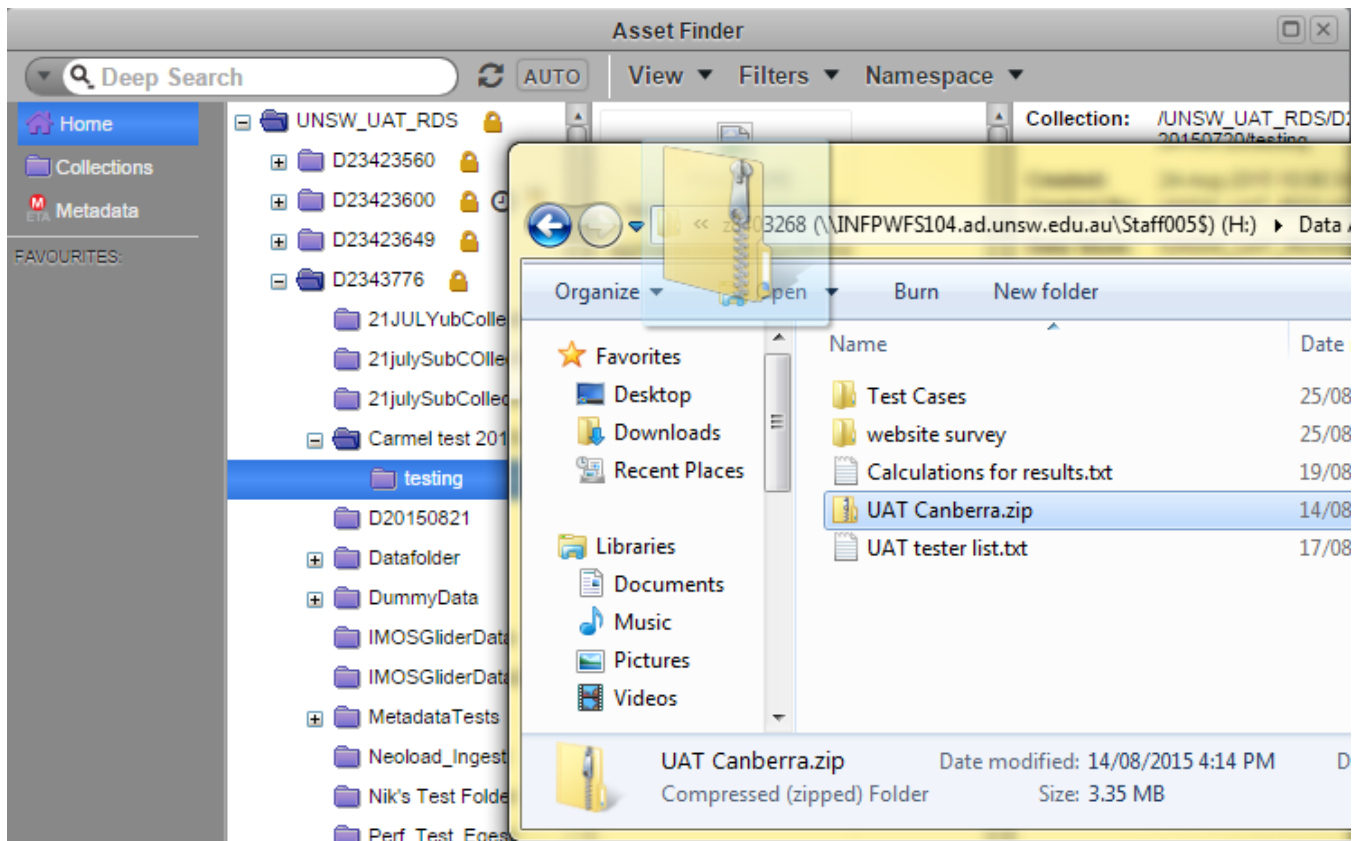
On the upper left side of the screen, you'll see the Asset Finder icon.



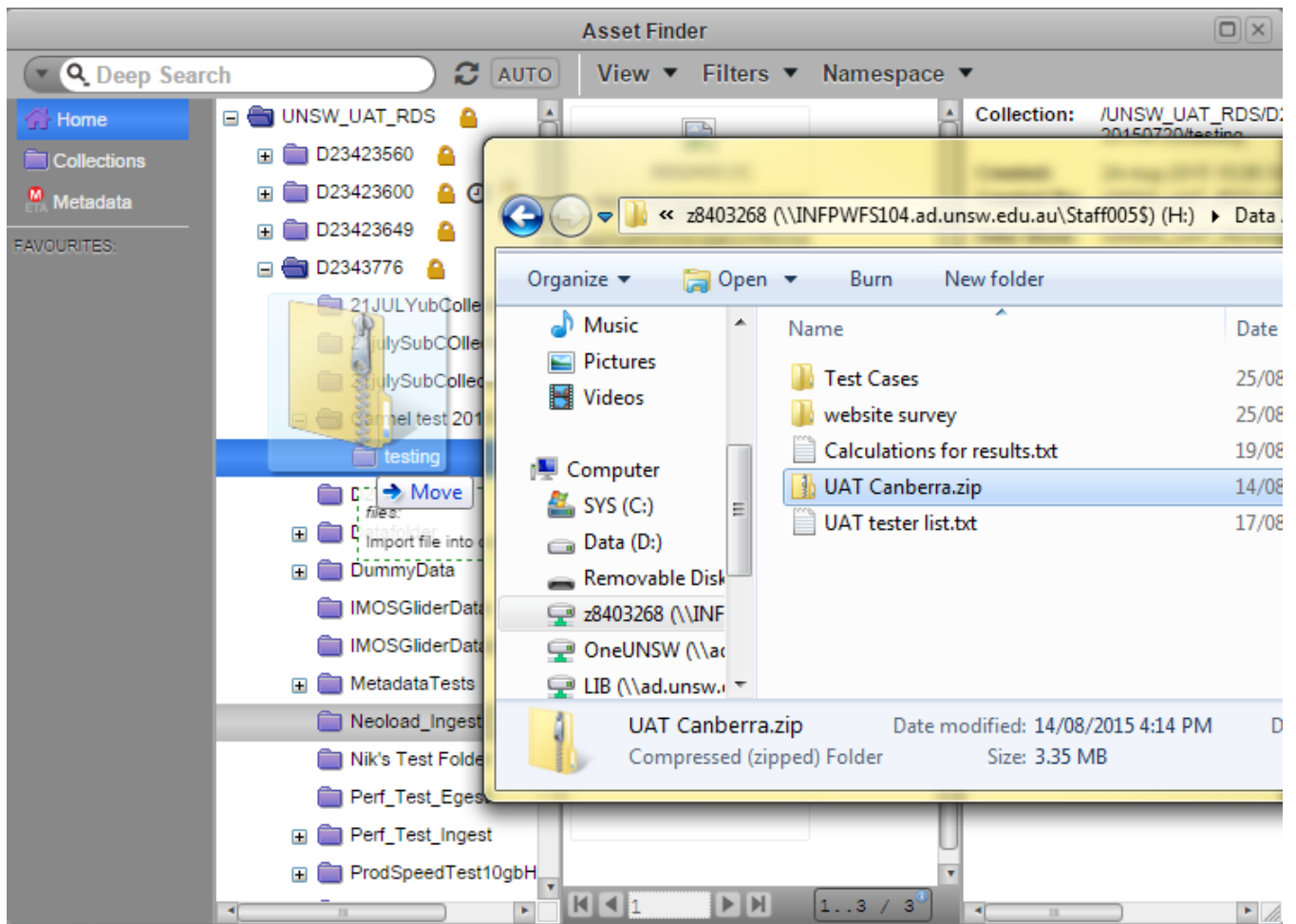
2. Double click on the Asset Finder icon to open.



3. In Asset Finder, navigate to the location where you wish to upload the compressed file.
4. On your local computer, navigate to the location of the compressed file to be uploaded.
5. Drag the compressed file from your local location.



6. Drop the compressed file into the second or third pane of the selected Data Archive location in Asset Finder.



7. A notification box will pop up on the screen. Click the 'Import Files' button on the bottom right hand side.

Import Files □

Steps: **1. Packaging** + 2. Name etc. + 3. Location + 4. Metadata

Packaging: ⓘ None ▼ **Parent Asset:** ⓘ

Compression Level: ⓘ **Create Parent Asset:** ⓘ ☐

Quota Impact: ⓘ No quotas apply to this upload.

Import Empty Folders: ⓘ ☐

Name	Total	Size	
UAT Canberra.zip	1	3.51 MB	

Cancel
Previous
Next
Import Files

Asset Import □

Progress:

Files: 38 / 69
 Size: 4.13 MB / 7.66 MB
 Skipped:
 Destination: /UNSW_UAT_RDS/D2343776/MetadataTests

Current:

Directory:
 File: HTML5 Drag from Local file.png
 Status: CONSUMING
 Size: 181.89 KB

00:00:01
00:00:01

Abort
Background

See a progress bar on the screen in front

8. Once the compressed file has been uploaded successfully, a 'Dismiss' button will appear on the notification box. Click the 'Dismiss' button to complete the upload process.



Help and further information:

- To learn more about the Data Archive:
 - go to the [Start here](#) page
 - see all [Help Topics](#)
 - see all [Frequently Asked Questions](#) (FAQs)
 - browse through the carousel on the [homepage](#) to view all available videos
- To access the Data Archive Web application, use this [link](#), or, go to the [Home](#) page for other access options
- To create, or update, a Research Data Management Plan go to the [ResToolkit](#) service
- **Note:** the Data Archive service is also available over SFTP, see the [SFTP client guide](#) for more information