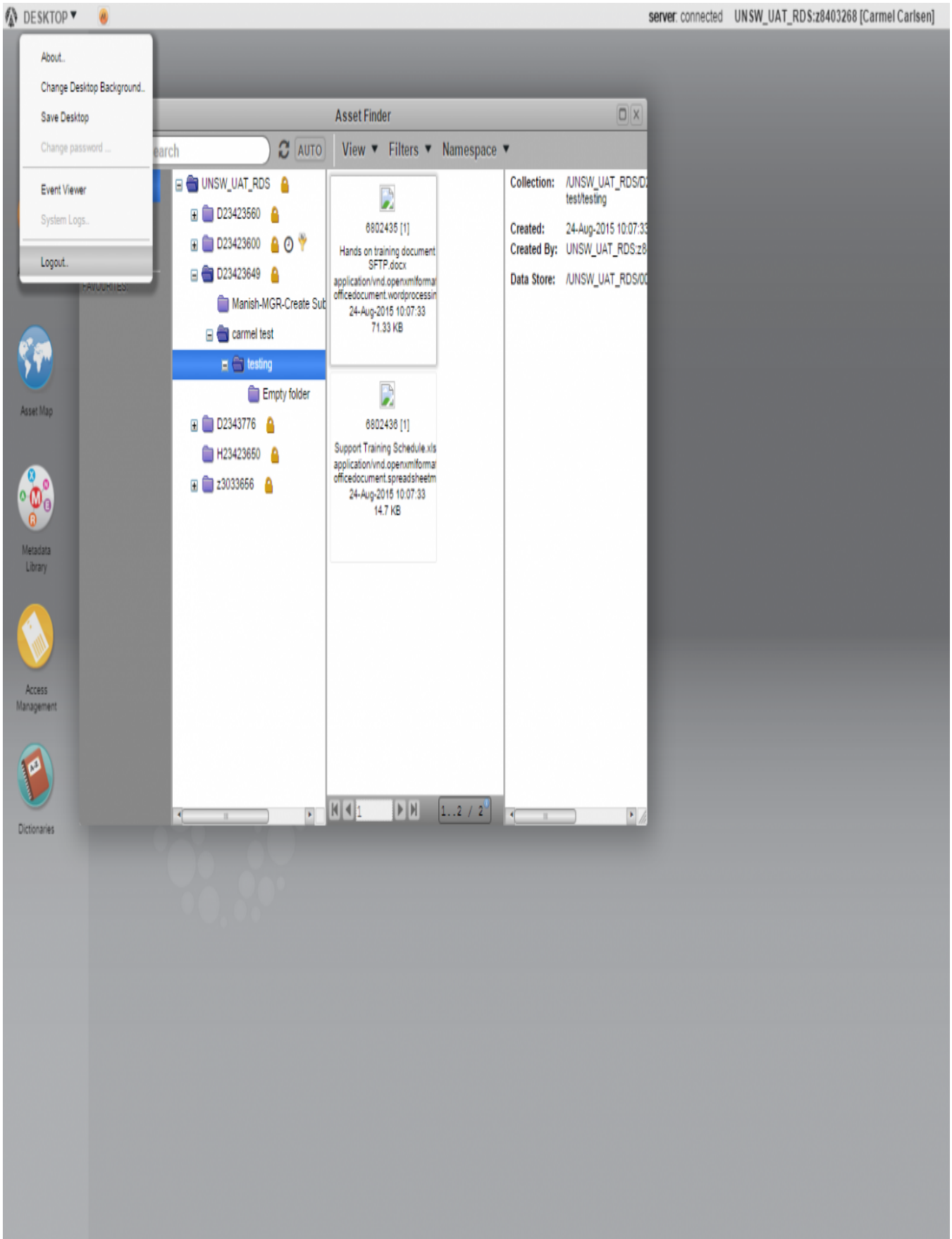




**UNSW**  
SYDNEY

## **How do I logout / logoff?**

To logout / logoff from the Data Archive application, click 'Desktop' on the top left hand corner of the dashboard screen, and then click 'Logout'.



**Help and further information:**

- To learn more about the Data Archive:
  - go to the [Start here](#) page
  - see all [Help Topics](#)
  - see all [Frequently Asked Questions \(FAQs\)](#)
  - browse through the carousel on the [homepage](#) to view all available videos
- To access the Data Archive Web application, use this [link](#), or, go to the [Home](#) page for other access options
- To create, or update, a Research Data Management Plan go to the [ResData](#) service
- **Note:** the Data Archive service is also available over SFTP, see the [SFTP client guide](#) for more information