



## What do I do with the 'Application Blocked' message?

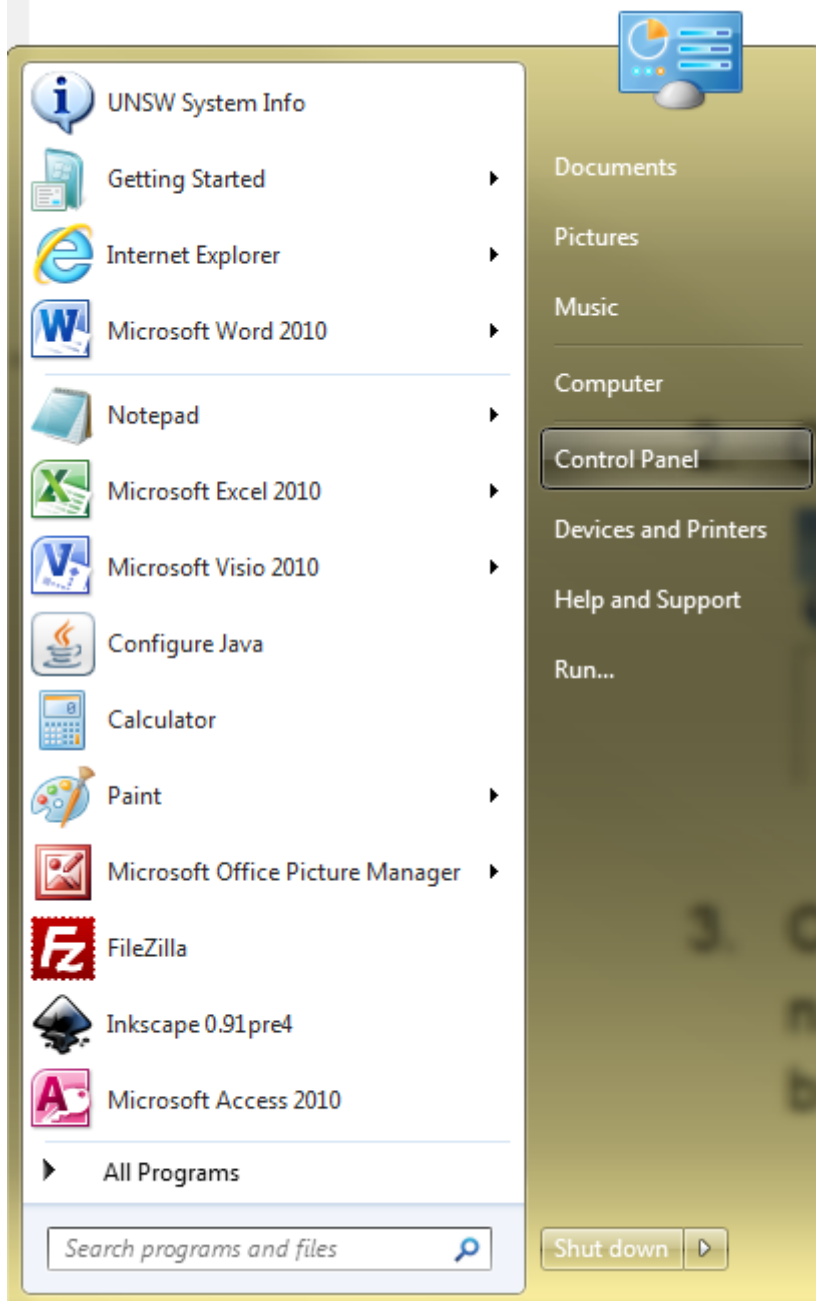
When using the Java applet web-based user interface you may receive the '**Application Blocked by Java Security**' message:



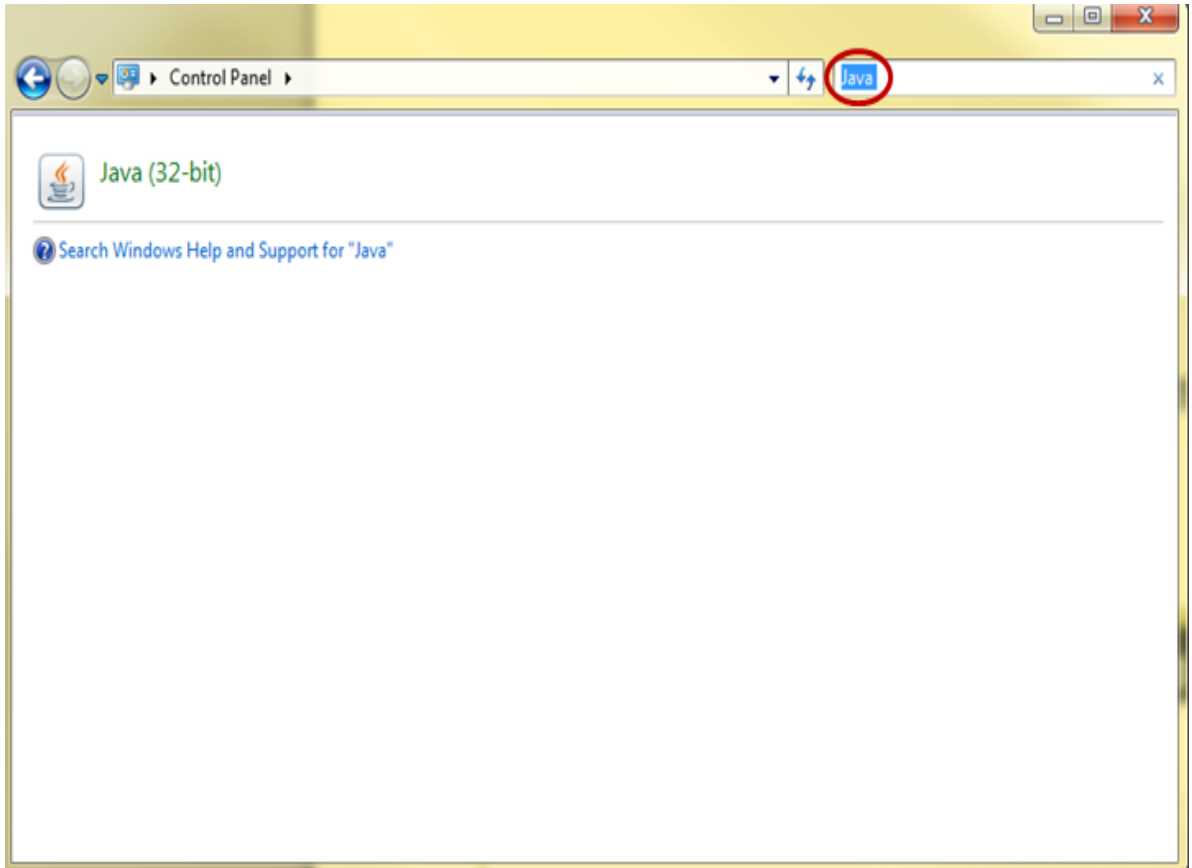
To prevent this message appearing and to enable Java (dti) to function, add the Data Archive url to your Java exception list using the steps set out below:

1. Open the Java Control Panel.

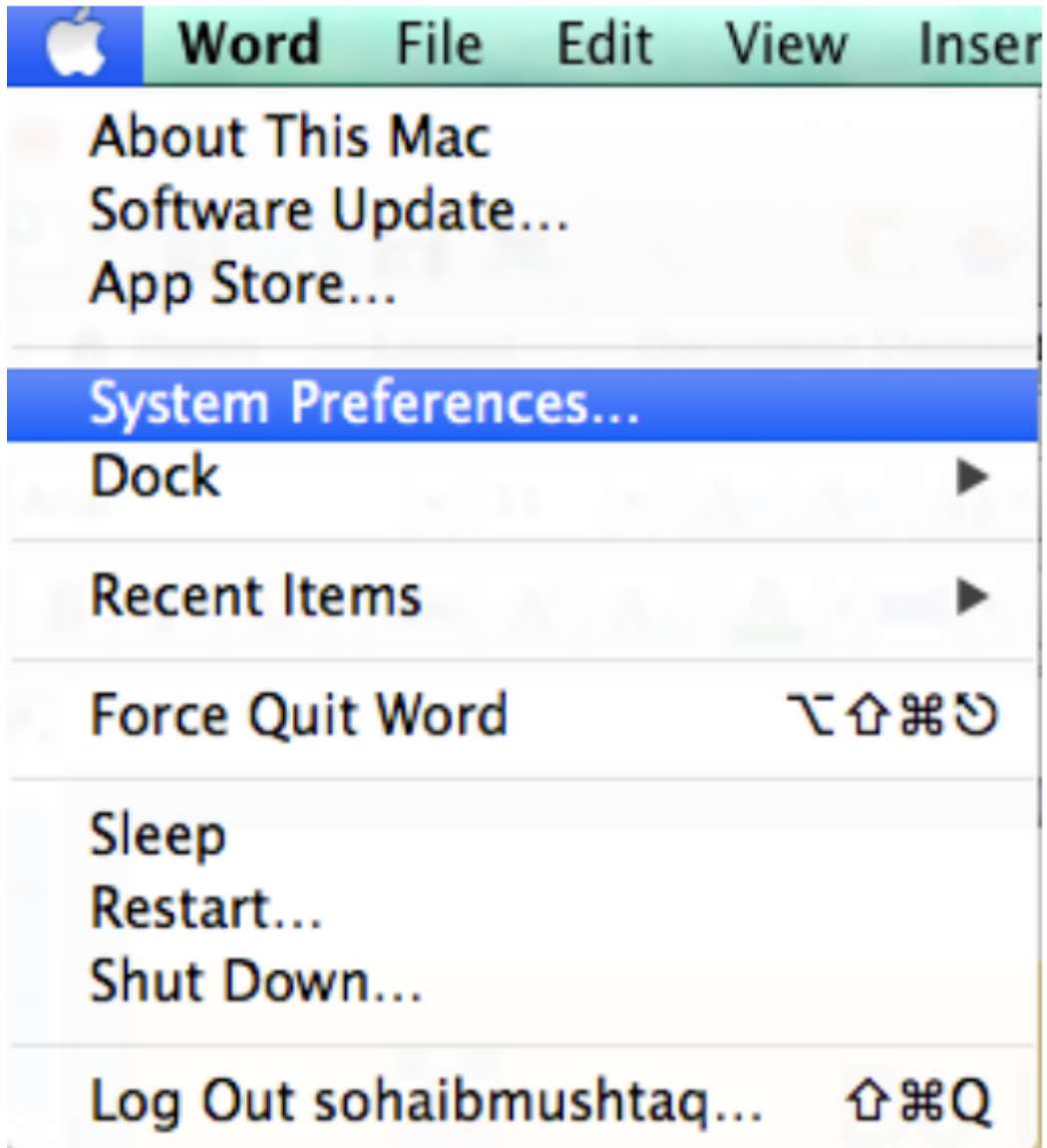
- **For Windows:**
  - Go to Start and click on Control Panel.



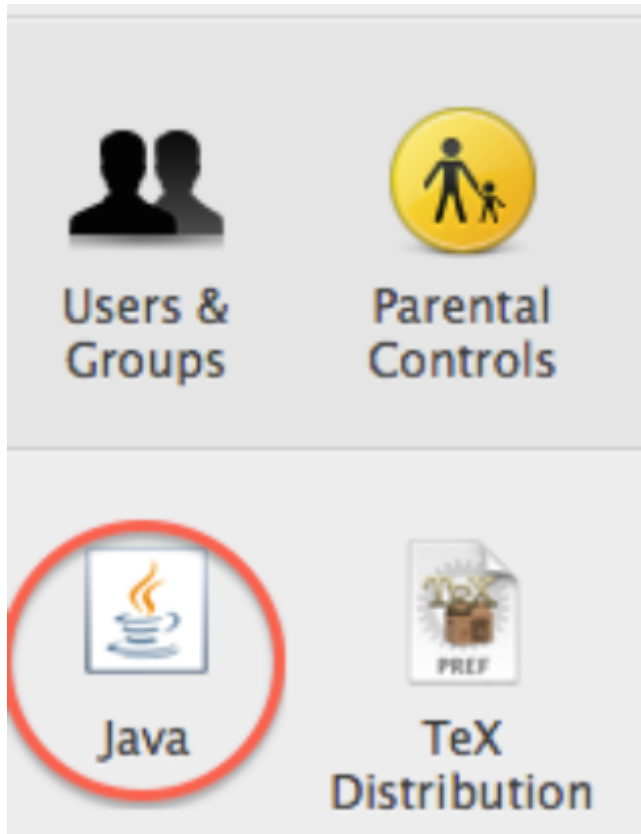
- Click on Control Panel and enter 'java' in the search box.



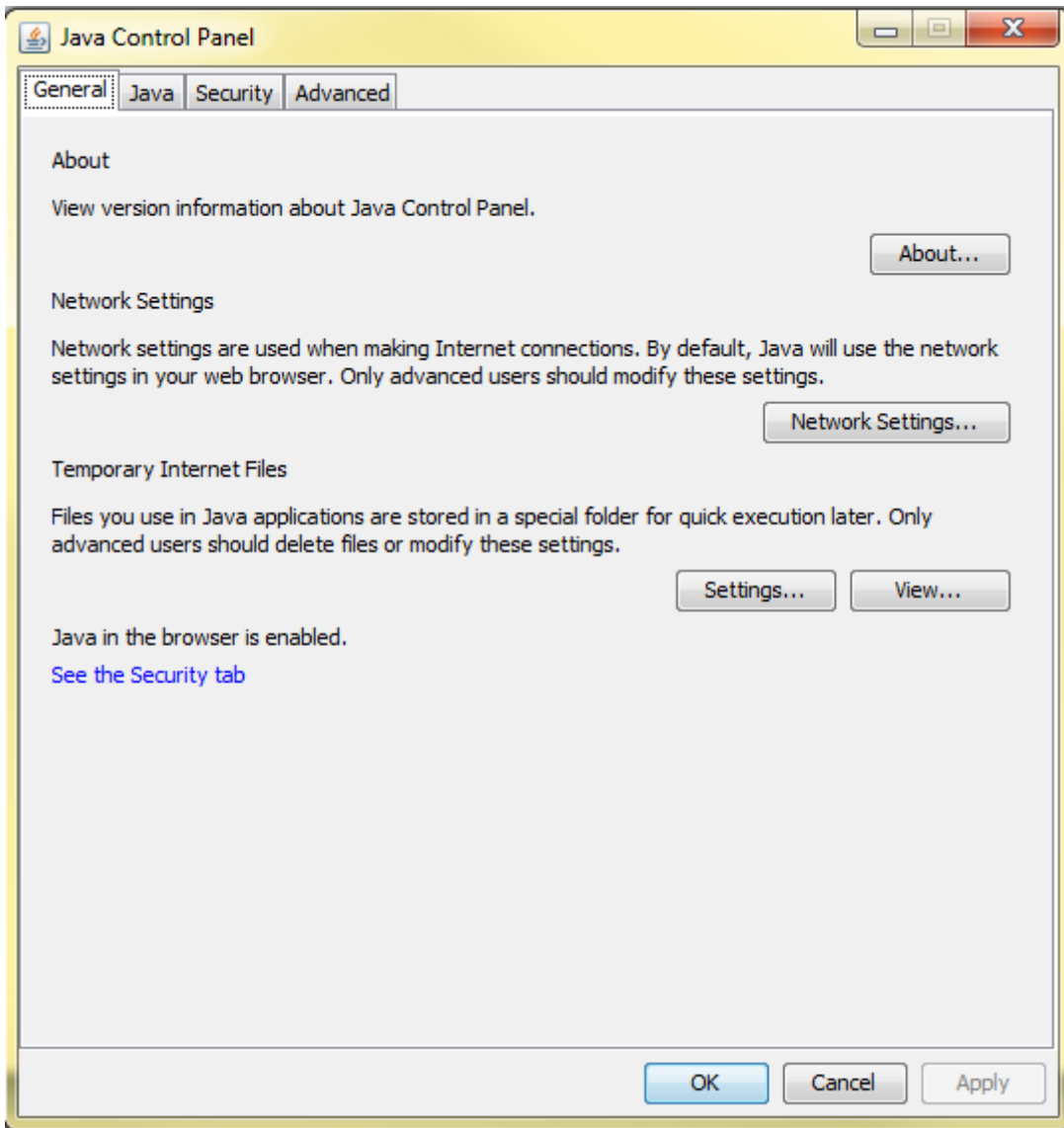
- Double click on the Java icon to open the Java Control Panel.
- **For Mac:**
  - Go to System Preferences.



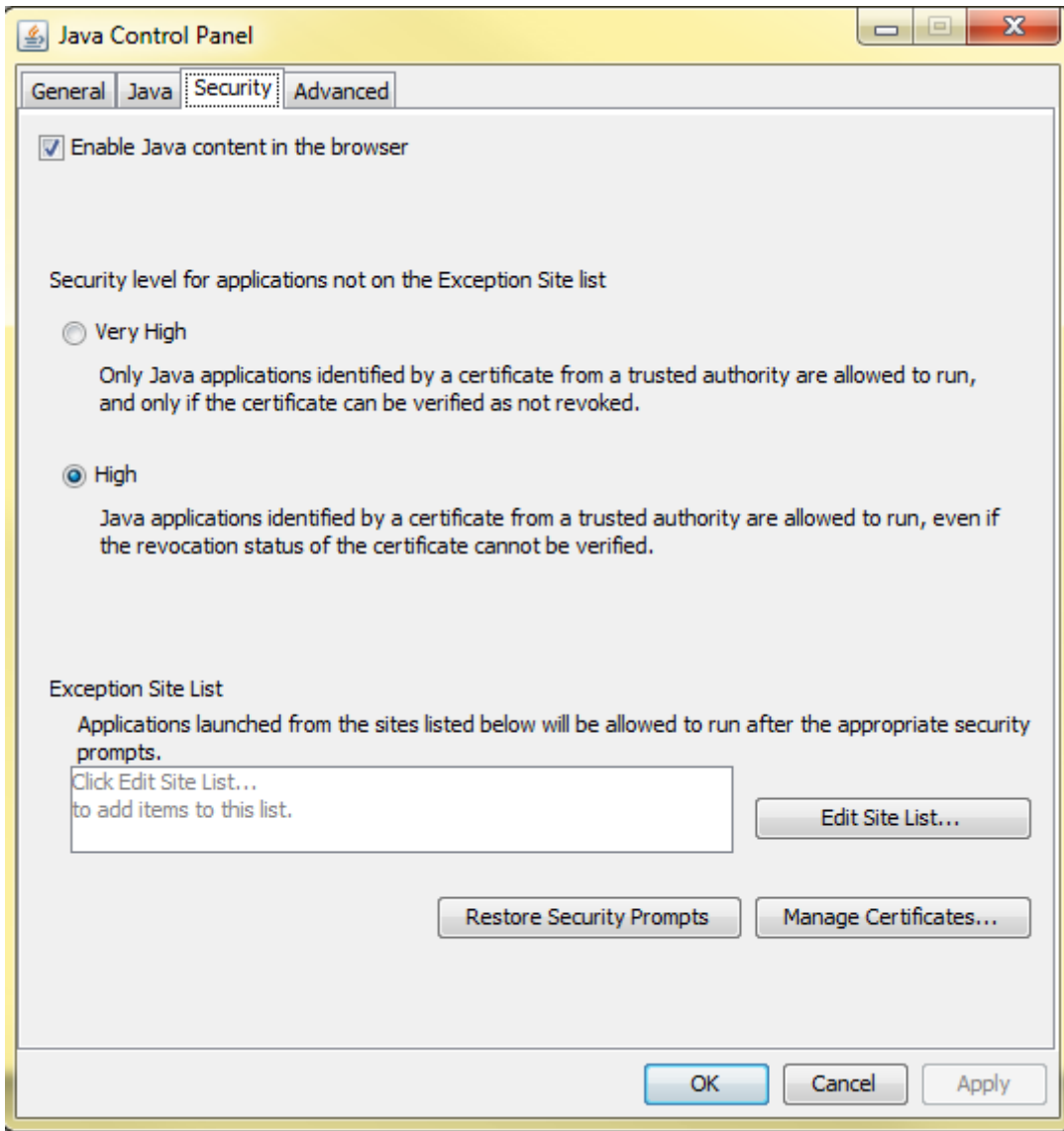
- Click on Java Settings to open the Java Control Panel.



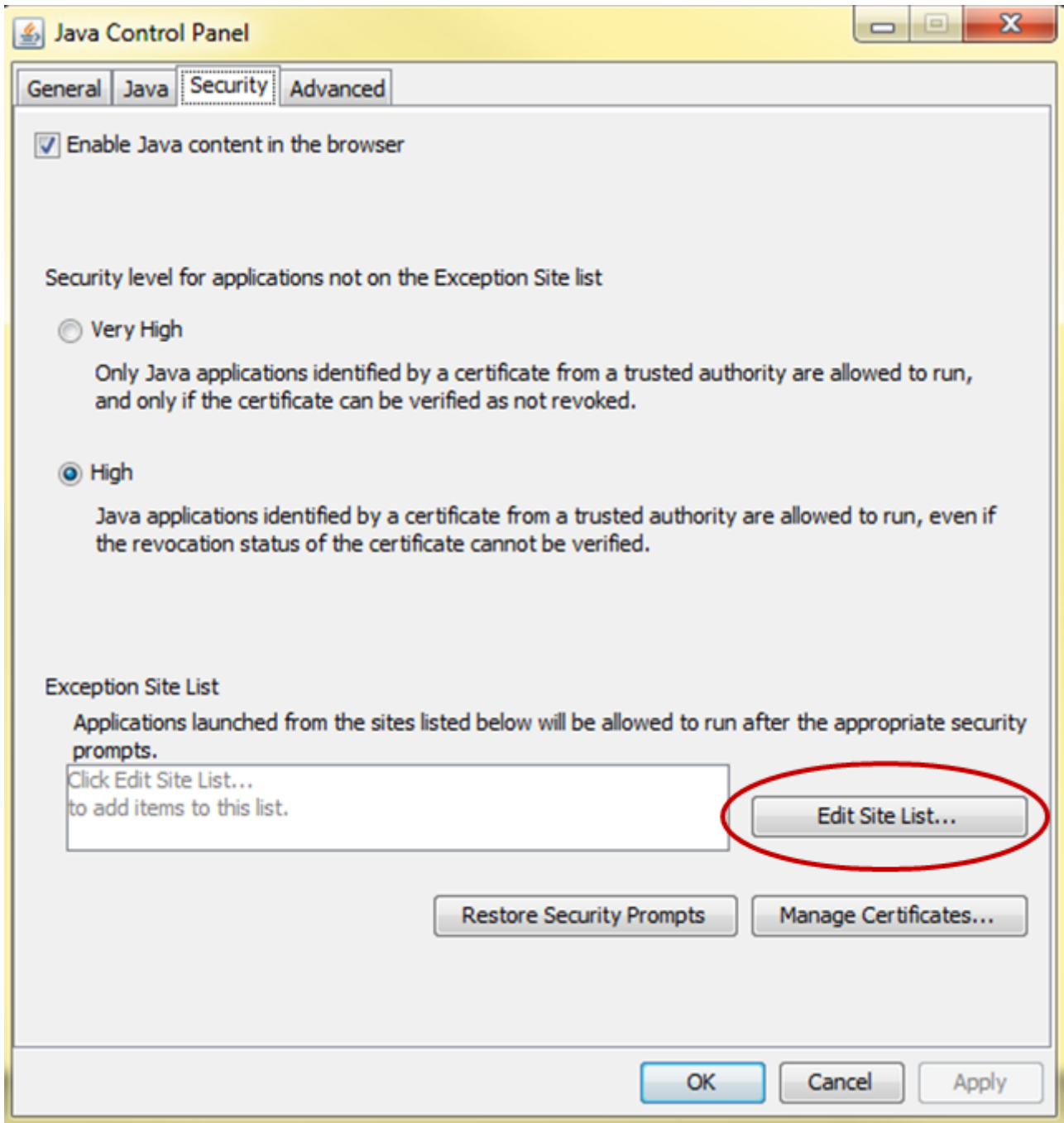
2. Update the Java Control Panel.



3. Click on the **Security** tab.

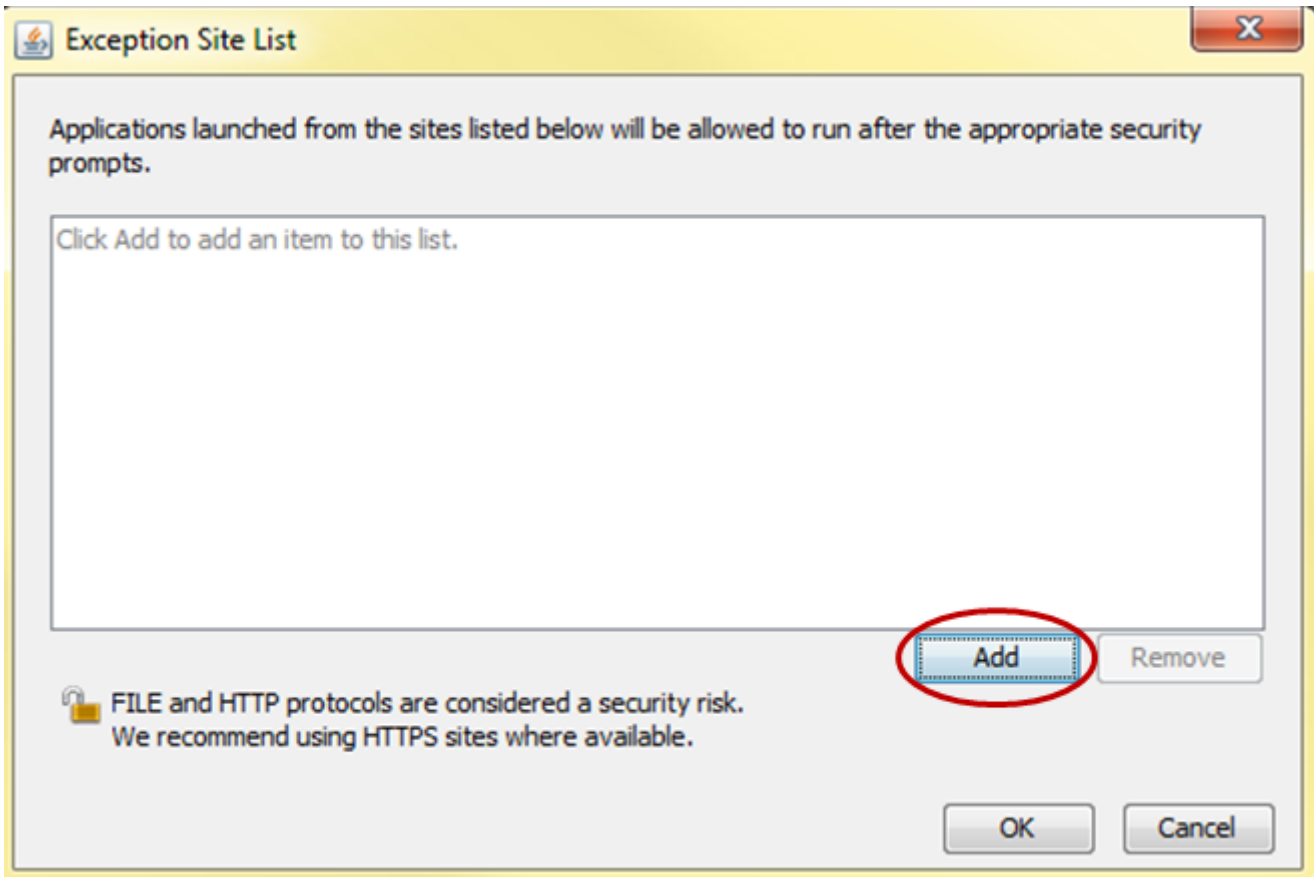


4. Click on the **Edit Site List...** button.

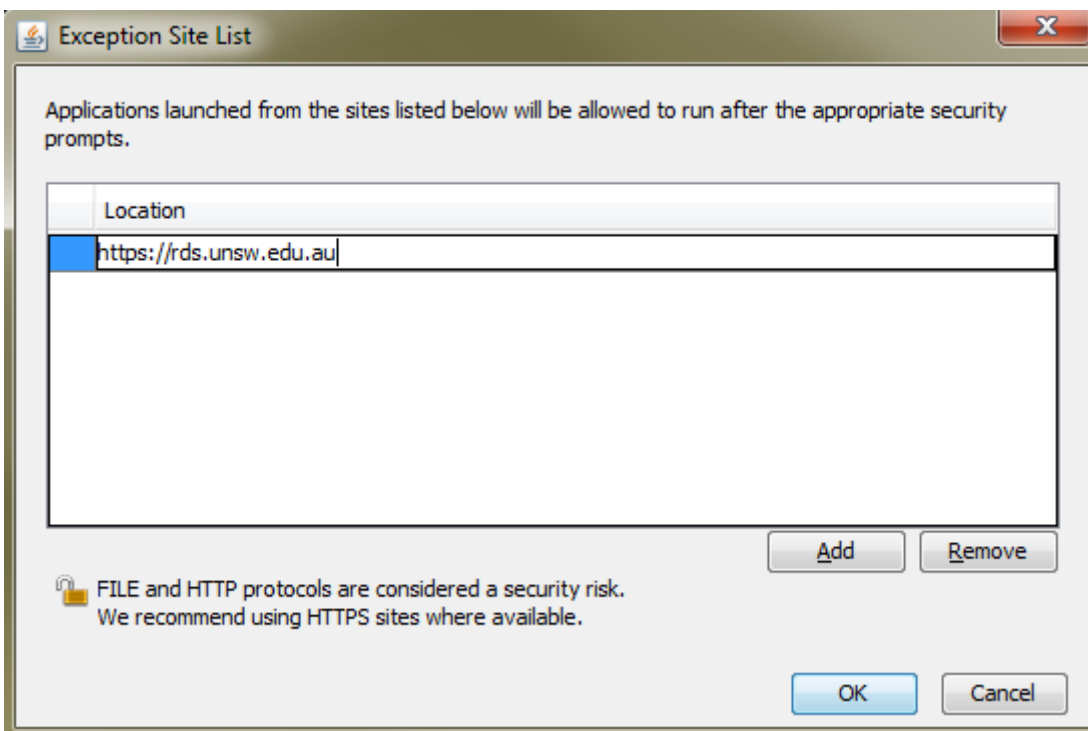


5. Click on the Add button



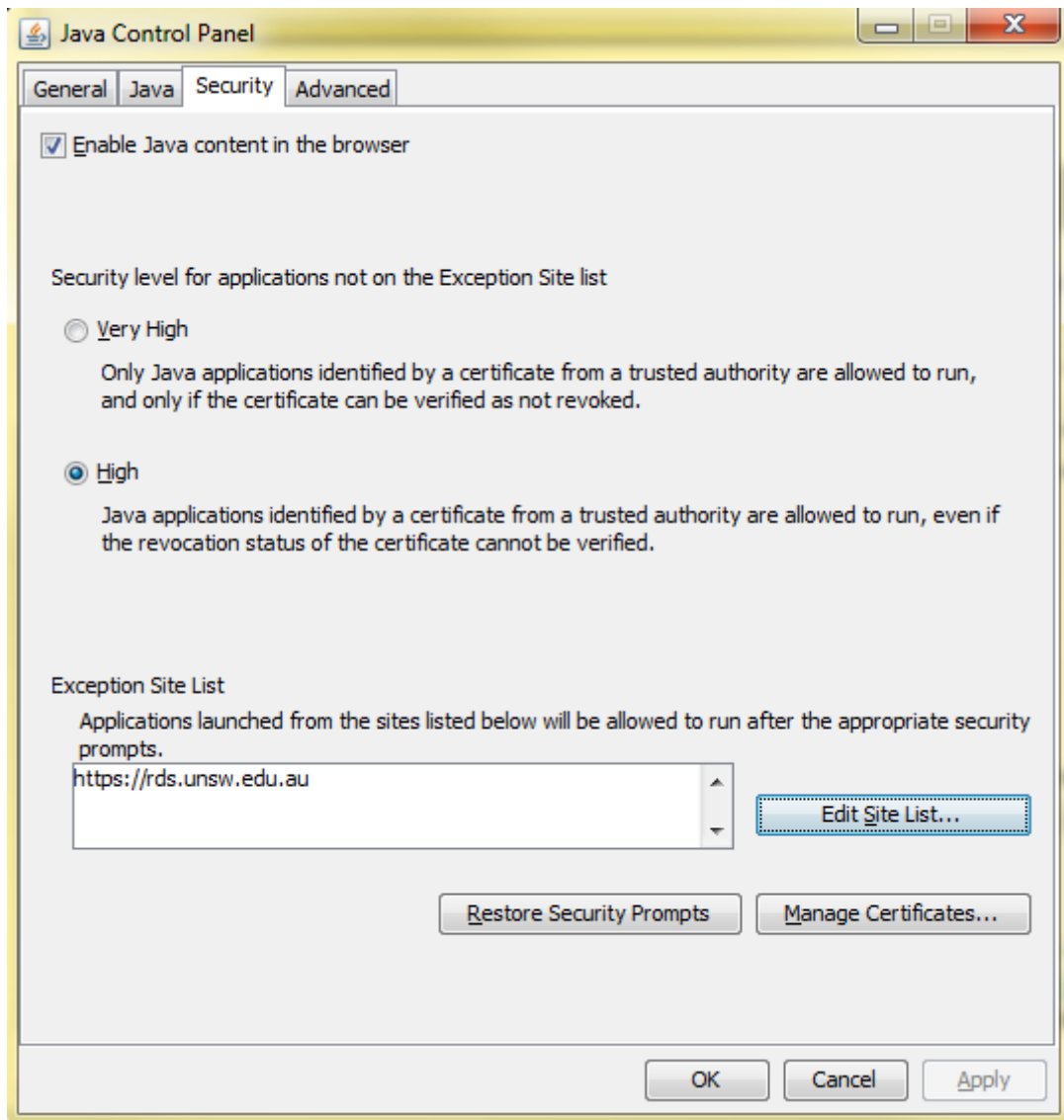


6. Enter the Data Archive url: <https://rds.unsw.edu.au>.



7. Click on the OK button to save your changes.

8. Click on the OK button to close the Java Control Panel.



See the [Java applet guide](#) for further information and other troubleshooting ideas.

**Note:** adding the Data Archive url ([rds.unsw.edu.au](https://rds.unsw.edu.au)) is also required when using the [Safari](#) browser. See the [Safari](#) section of the [How do I configure my browser for Java? FAQ](#).

**Note:** the '[Security Redirect](#)' message may be the next issue you encounter.

**Note:** Java is not required when you use the [Web application](#). For further information on using the Web application see the [Web application guide](#).

**Help and further information:**

- To learn more about the Data Archive:
  - go to the [Start here](#) page
  - see all [Help Topics](#)
  - see all [Frequently Asked Questions \(FAQs\)](#)
  - browse through the carousel on the [homepage](#) to view all available videos
- To access the Data Archive Web application, use this [link](#), or, go to the [Home](#) page for other access options
- To access the Data Archive using the Java applet web-based user interface, use this [link](#). For more information, see the [Java applet guide](#)
- To create, or update, a Research Data Management Plan go to the [ResData](#) service
- **Note:** the Data Archive service is also available over SFTP, see the [SFTP client guide](#) for more information